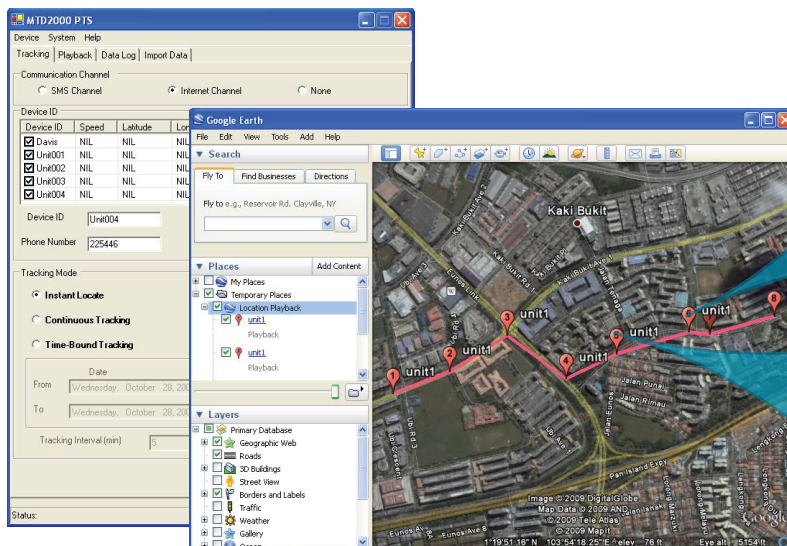


Tracking people, vehicle and assets have never been easier and cost effective with Daviscomms EaziTRAC series of tracking solutions. EaziTRAC provides an integrated tracking solution that includes both specially conceptualized tracking devices and the visual presentation of tracked devices on Google Map.

EaziTRAC System 2000 is a PC based tracking application software that uses the Google Map to present the real time tracking of EaziTRAC 1000 and EaziTRAC 2000 devices on a map. It can be used world wide and at the privacy of your home on an internet enabled PC. The EaziTRAC System 2000 features include instant or continuous tracking with data log and playback options to view the vehicle travel route history.

Both the EaziTRAC 1000 and the EaziTRAC 2000 are seamlessly integrated to the EaziTRAC System 2000 to provide a simple and cost effective tracking solution. When you start the EaziTRAC System 2000 application on your computer, registered EaziTRAC tracking devices are automatically connected to it. Location data of the devices are sent to your computer almost instantaneously. The locations of the tracked devices can be viewed on the Google Map real time and the data can be playback to view the route history of the devices.



EaziTRAC 1000

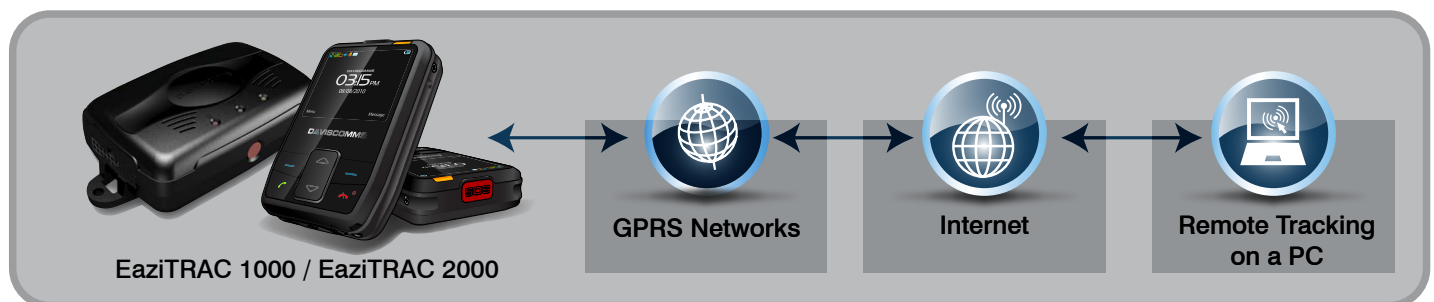


EaziTRAC 2000

## Features:

- Works with Windows XP, Vista and 7.
- Tracks both EaziTRAC 1000 and EaziTRAC 2000 at the same time.
- Instant locate or continuous tracking options.
- Data log of travel history with speed information.
- Emergency Alert Activation notification on PC screen.

## System Architecture:



# DAVISCOMMS